



ALASKA DIVISION OF HOMELAND SECURITY & EMERGENCY MANAGEMENT



Daily Situation Report 26-035 • February 4, 2026

Toll-Free 1.800.478.2337

Anchorage Area 907.428.7000

SEOC 907.428.7100

<u>SEOC Preparedness Level</u> Level 1-Routine Operations	http://ready.alaska.gov	<u>Alaska Military Installation Force Protection Level:</u> FPCON Bravo
<u>NTAS Bulletin</u> There are no current advisories https://www.dhs.gov/national-terrorism-advisory-system	<u>Maritime Security (MARSEC)</u> Level:1 Minimum Appropriate Security Measures	

(Significant changes from previous situation reports are red.)

Significant Issues:

NONE

2025 October West Coast Storm Disaster:

- 92 households/287 individuals transitioned from non-congregate shelters (hotels) to longer-term housing (apartments)
- In Non-Congregate Shelter (hotels) Individuals: 399, Households: 99

Division of Homeland Security and Emergency Management Public Information:

For current press releases, see: <https://ready.alaska.gov/PublicInformation/PressReleases>

Department of Health (DOH):

For current information, see: <https://health.alaska.gov/en/>

Travel Alerts and Conditions:

For current driving conditions, dial 511 or visit: <https://511.alaska.gov/>

Barry Arm Landslide / Tsunami Risk:

The Barry Arm landslide currently shows no signs of large-scale active deformation but smaller-scale instabilities on the surface of the landslide still pose a threat of localized tsunami generation in Barry Arm. Mariners transiting near Barry Arm should remain vigilant.

For the latest information on the Barry Arm Landslide and Tsunami risk, click here:

<https://dggqs.alaska.gov/hazards/barry-arm-landslide.html>

Earthquakes:

United States Geological Service (USGS) Earthquake Information:

[Earthquake Hazards Program | U.S. Geological Survey](#)

National Tsunami Warning Center: <https://tsunami.gov/>

Alaska Volcanoes:

Great Sitkin: Alert Level: Watch and Aviation Color Code: Orange

Shishaldin: Alert Level: Advisory and Aviation Color Code: Yellow

For Alaska Volcano updates, go to: <https://www.avo.alaska.edu/>

Air Quality Index (AQI) Advisories:

For the most up-to-date Air Quality Index Advisories:

<https://dec.alaska.gov/Applications/Air/airtoolsweb/Advisories>

Spills of Oil and Hazardous Substances:

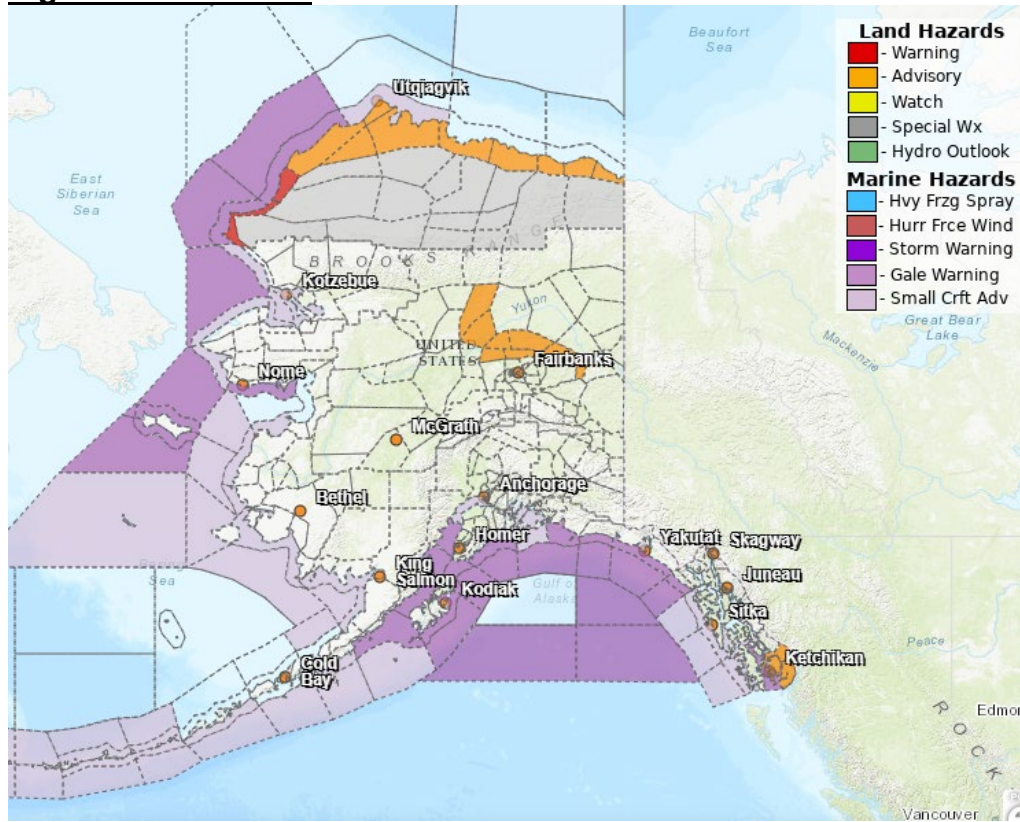
The Alaska Division of Environmental Conservation (ADEC) Spill Prevention and Response page is located at: <https://dec.alaska.gov/spar/ppr/spill-information/response/>

Alaska Cyber Security Information:

State Employees may sign up for cybersecurity notifications and alerts at:

<https://oit-int.alaska.gov/security/>

Significant Weather:



WARNINGS:

Winter Storm Warning remains in effect for Western Arctic Coast until 3 PM Thursday.

ADVISORIES:

Wind Advisory remains in effect for Ketchikan Gateway Borough; Annette Island until noon today.

Winter Weather Advisory is now in effect for Dalton Highway Summits; White Mountains and High Terrain South of the Yukon River from Until 3 AM Thursday

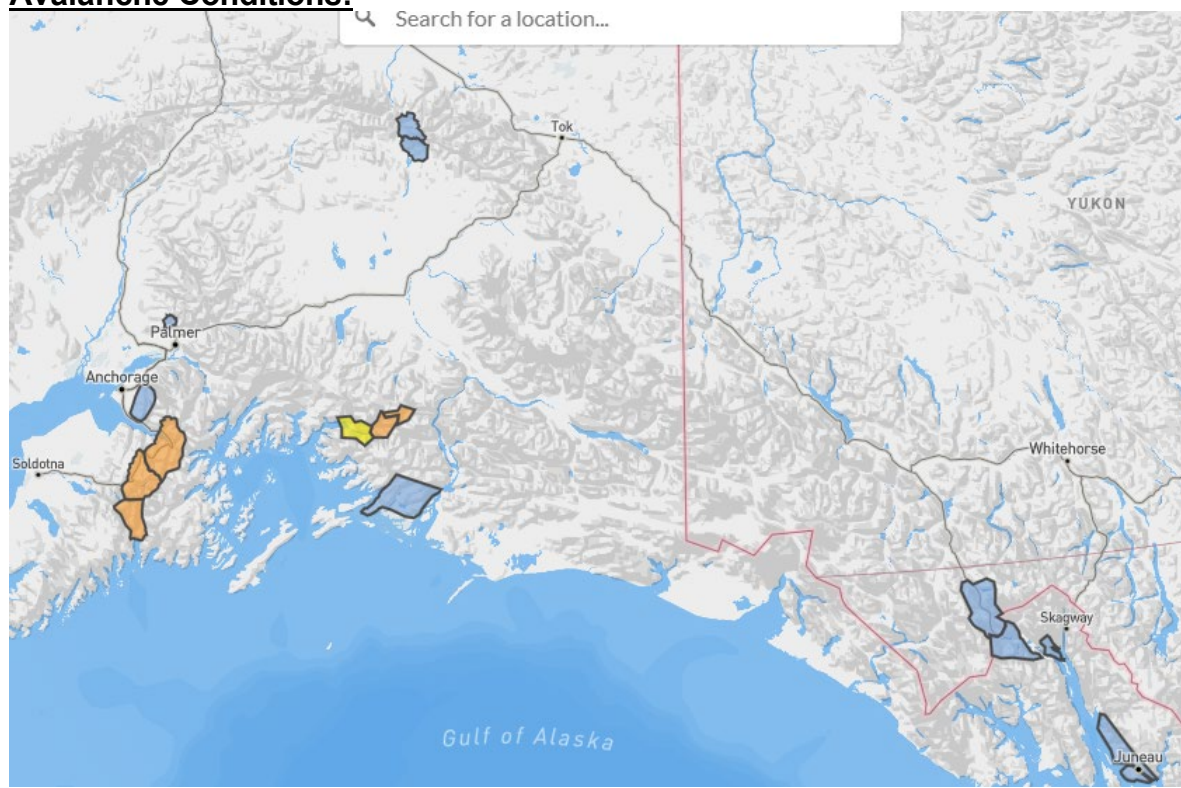
Flood Advisory is now in effect for Ketchikan Gateway Borough till 3pm this afternoon.

ALERTS:

Special Weather Statement for Western Arctic Coast; Northwest Arctic Coast; Northern Arctic Coast; Central Beaufort Sea Coast; Eastern Beaufort Sea Coast; Western Arctic Plains; Howard Pass and the Delong Mountains; Central Arctic Plains; Central Brooks Range; Romanzof Mountains; Very Cold Wind Chills and Periods of Blowing Snow Continue through the End of the Week

For more information, go to <https://www.weather.gov/arh>

Avalanche Conditions:



Hatcher Pass – Low below 3500'; Moderate above 3,500'

Chugach State Park – Dangerous avalanche conditions exist, travel in avalanche terrain is not recommended.

Turnagain Pass and Girdwood – Considerable above 2500' Moderate at treeline

Summit Lake – Considerable below 1000' Moderate below treeline

Seward and Lost Lake – Considerable above 2500' Moderate at treeline

Maritime; Intermountain; Continental – Moderate at all levels

Haines – Wind slabs may be present, deeper weak layers remain a concern.

For more information and the most current avalanche conditions, go to <https://alaskasnow.org>

The Next Situation Report will be on **February 5, 2026**. A significant change in situation or threat level will prompt an interim report. This report is posted on the internet at <https://ready.alaska.gov/sitrep>.

To register for email distribution, go to: <http://list.state.ak.us/mailman/listinfo/dhsem.situation.report>. Direct questions regarding this report to the SEOC at 907-428-7100 or seoc@alaska.gov